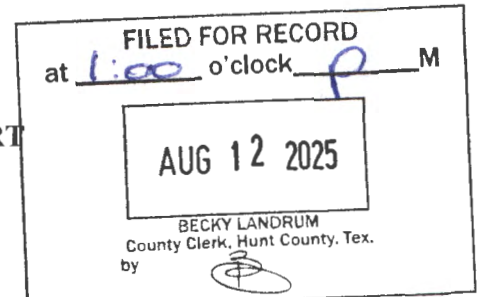


19,634

IN THE COMMISSIONERS COURT  
OF  
HUNT COUNTY, TEXAS  
ORDER REVISING ELECTION PRECINCTS




BE IT REMEMBERED, that on the \_\_\_\_ day of August, 2025, the Commissioners Court of Hunt County, Texas, adopted revised boundaries for its Election precincts, pursuant to Chapter 42 of the Texas Election Code, including but not limited to sections 42.006 and 42.031(b)(2).

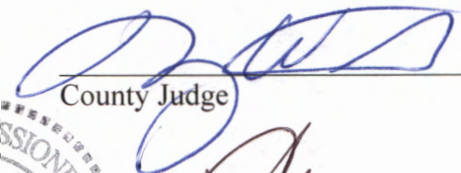
Pursuant to the provisions of Chapter 42, Texas Election Code, the Commissioners Court hereby approves the realignment of County Election Precincts to contain at least 100 but not more than 5,000 registered voters:


Election Precinct (Old)	New Election Precinct	Reason for Change
215A	215A	Due to population of voters from new developments within the County; Original Precinct 215A split to create a reduced size for 215A. See attached Revised Map of VTD 215A.
215A	215C	Due to population of voters from new developments within the County; Original Precinct 215A split to create a NEW precinct 215C. See attached NEW Map of VTD 215C.
215A	215D	Due to population of voters from new developments within the County; Original Precinct 215A split to create a NEW precinct 215D. See attached NEW Map of VTD 215D.
215A	215E	Due to population of voters from new developments within the County; Original Precinct 215A split to create a NEW precinct 215E. See attached NEW Map of VTD 215E.
216	215E	Due to expected population growth of voters from new developments within the County; Original Precinct 216 split and a portion moved into NEW Precinct 215E. See attached Revised Map of VTD 216 and NEW Map of VTD 215E.
Election Precinct (Old)	Election Precinct (Revised)	Reason for Change
214A	213	Due to expected population growth of voters from new developments within the County; Original Precinct 214A split and a portion moved into existing Precinct 213. See attached Revised Maps of VTD 214A and 213.
107	111	Due to expected population of voters to new developments within the County; Original Precinct 107 split and a portion moved into existing Precinct 111. See attached Revised Maps of VTD 107 and 111.

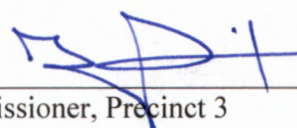
The above and foregoing changes to Election Precincts shall take effect 8-12, 2025,  
and will remain in effect until changes by further Order of this Commissioners Court.

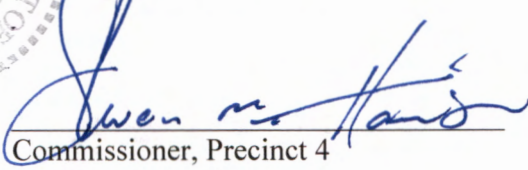
Date:

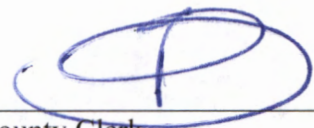
  
\_\_\_\_\_  
Commissioner, Precinct 1


  
\_\_\_\_\_  
County Judge

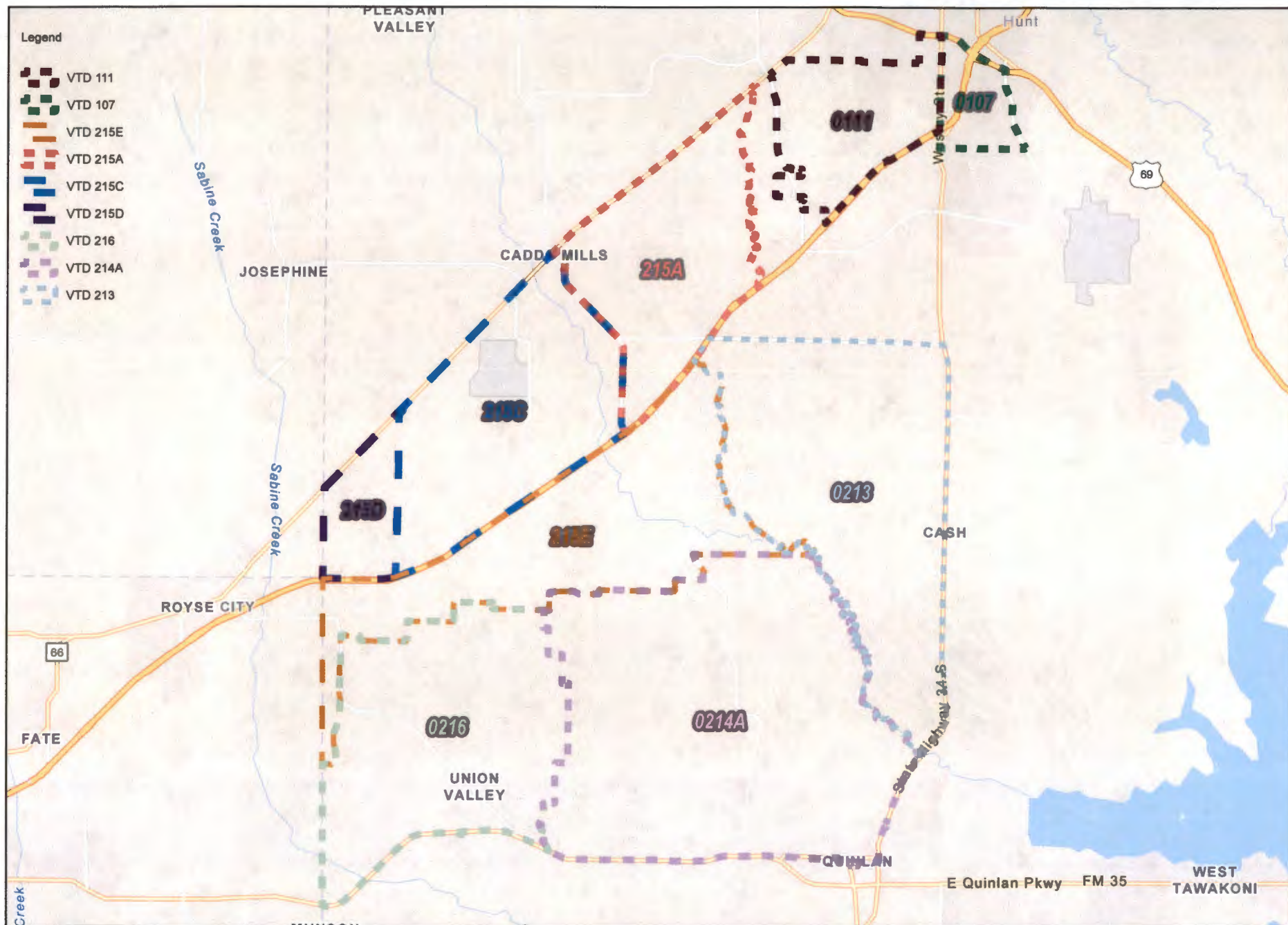
  
\_\_\_\_\_  
Commissioner, Precinct 2

  
\_\_\_\_\_  
Commissioner, Precinct 3

  
\_\_\_\_\_  
Commissioner, Precinct 4

  
\_\_\_\_\_  
County Clerk





Hunt County  
Overall Updated VTD's  
2025







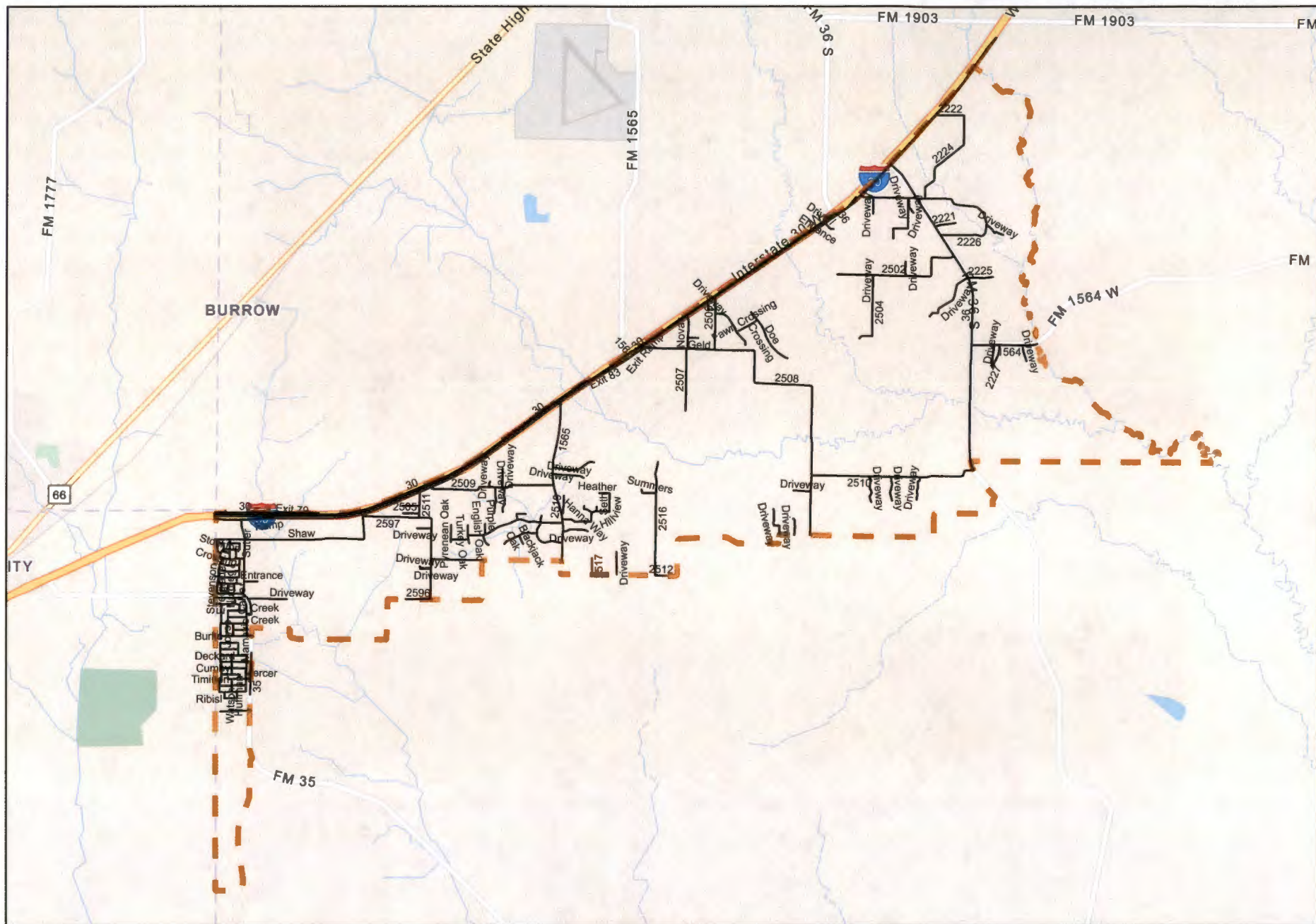




# Hunt County VTD 215D 2025

## Legend

- Hunt County Roads 215D
- VTD 215D

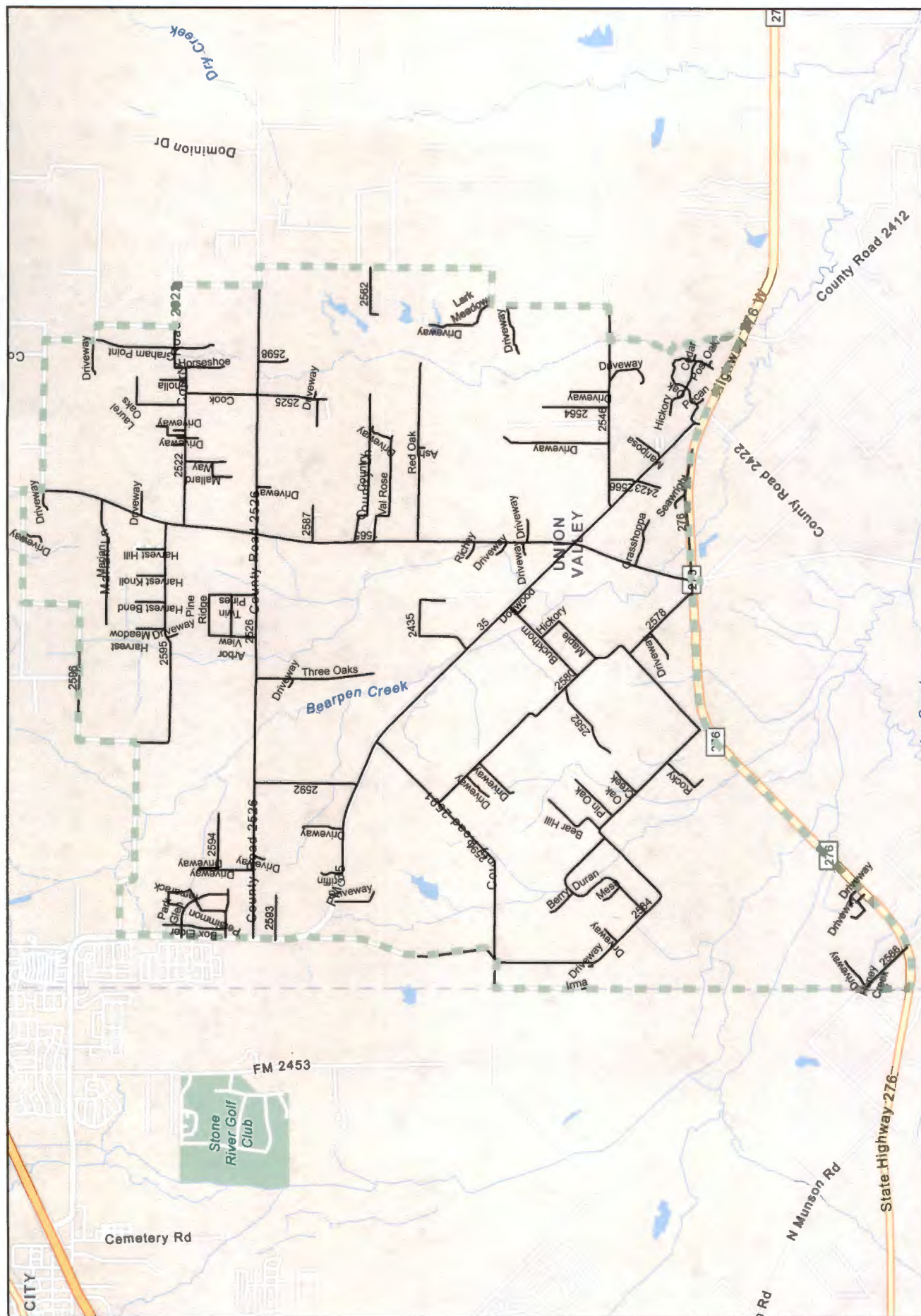


# Hunt County VTD 215E 2025

## Legend

- VTD 215E
- Roads 215E





**Hunt County  
VTD 216  
2025**

### Legend

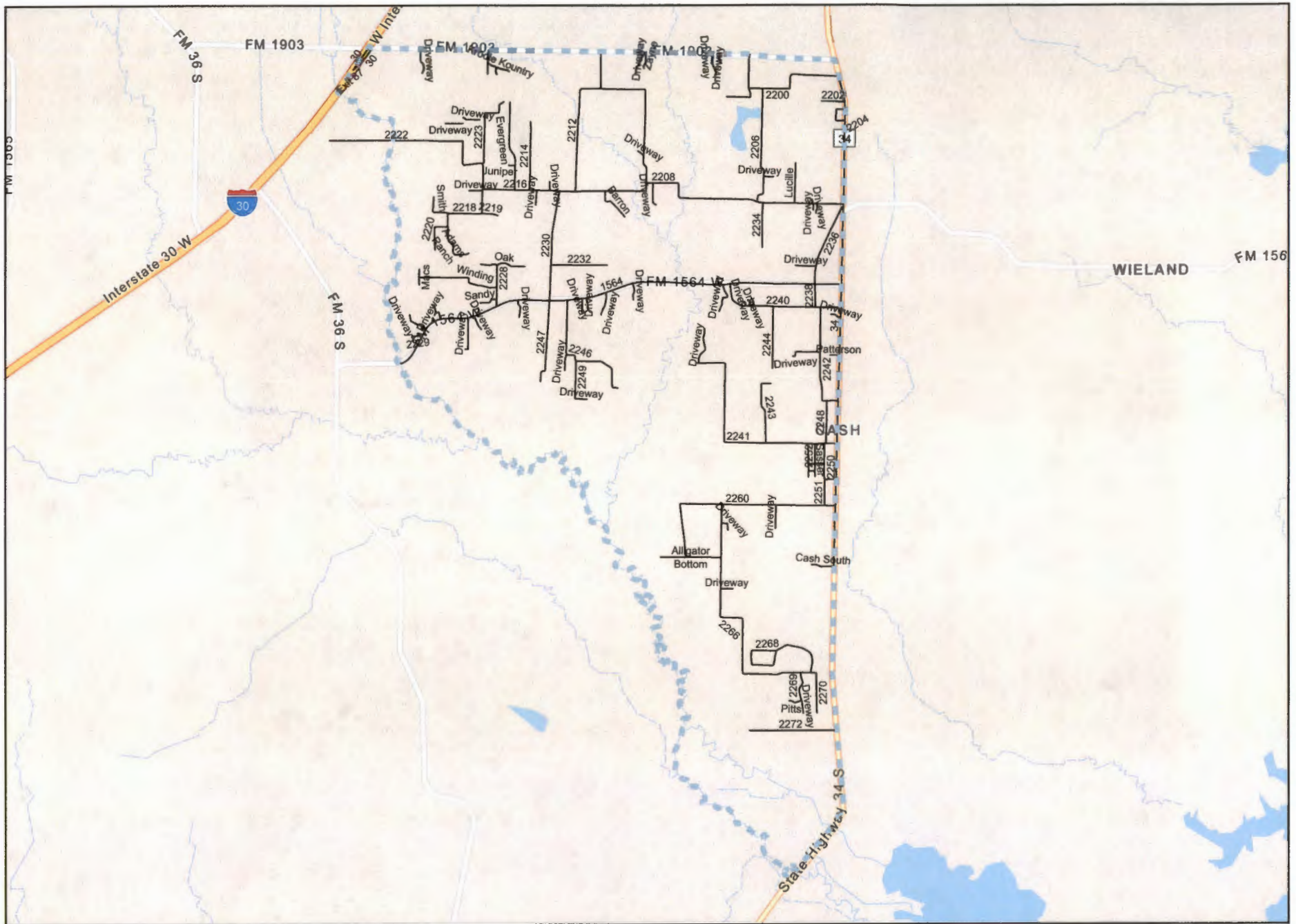
VTD 216

Roads 216







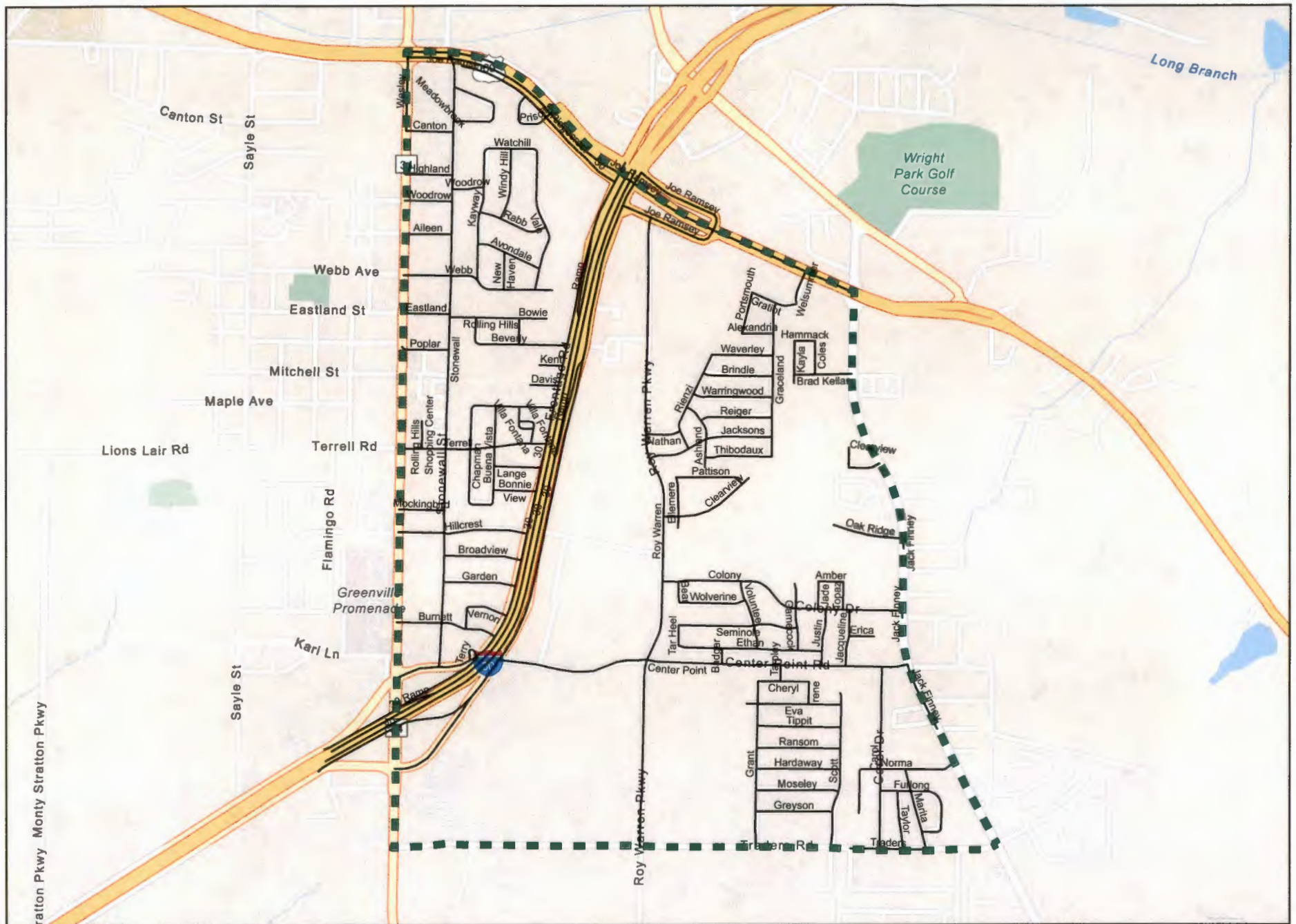


Hunt County  
VTD 213  
2025

Legend

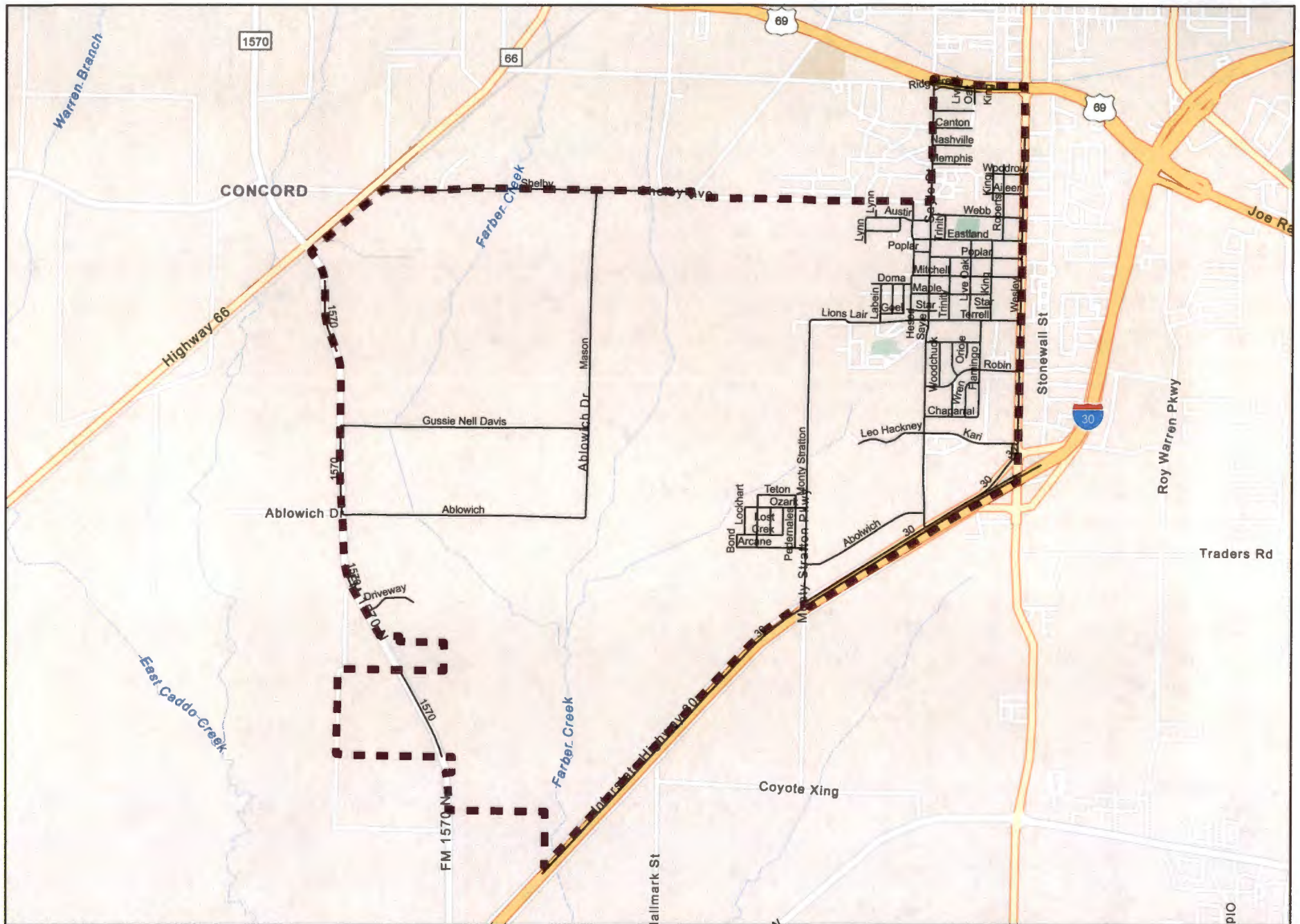
-  VTD 213
-  Roads 213





# Hunt County VTD 107 2025

- Legend
- VTD 107
  - Roads 107



# Hunt County VTD 111 2025

Legend

-  VTD 111
-  Roads 111